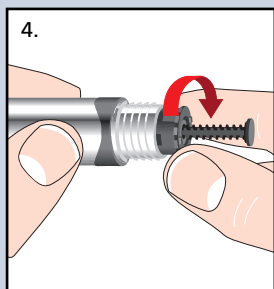
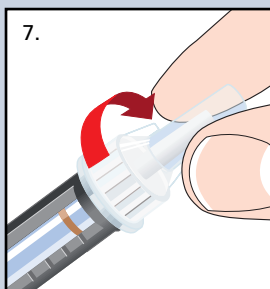
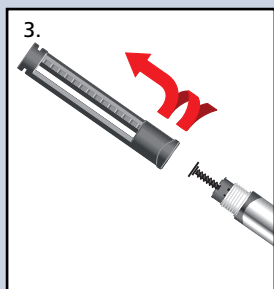
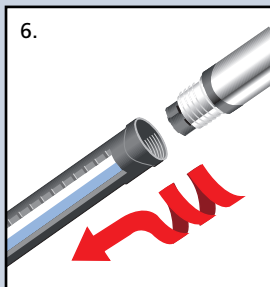
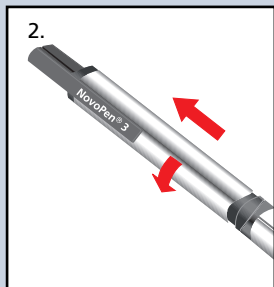
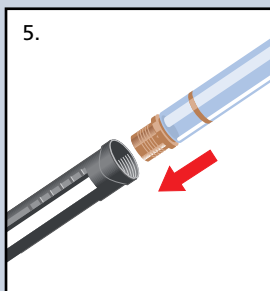
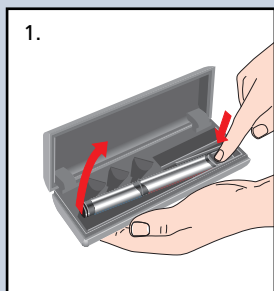


How to use your NovoPen® 3 Device.



Assembly

1. Take NovoPen® 3 out of its case by pressing the top of the cap.
2. Twist and pull off the cap.
3. Unscrew the Penfill® holder.
4. Turn the return mechanism to the right until the piston rod is completely inside it. Never push the piston rod back.

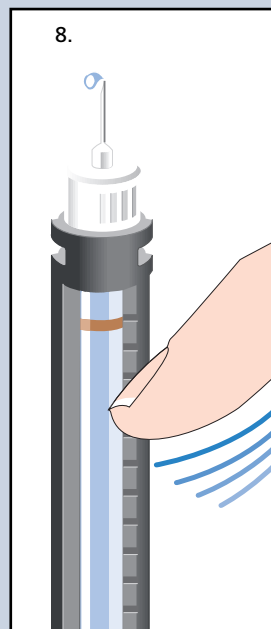
Important: Always reset the piston rod before inserting a new Penfill®. Never load a partially-filled Penfill®.

5. In the Penfill® leaflet you will find instructions on how to:
 - Check that Penfill® is intact (e.g. how to check for fissures).
 - Resuspend the insulin, if Penfill® contains an insulin suspension (cloudy insulin).
- Check that Penfill® contains the correct type of insulin.

Insert Penfill® into the Penfill® holder. The colour-coded cap goes in first.

6. Screw the mechanical section and the Penfill® holder securely together.
7. Take the protective tab off a NovoFine® needle and screw the needle securely onto the colour-coded cap.

Pull off the outer and inner needle caps.
Do not bend or damage the needle before use.



Priming NovoPen® 3

8. Always prime NovoPen® 3 to ensure the insulin flow before each injection.

It is important that insulin appears at the tip of the needle before you make your injection. Otherwise you will not receive the full insulin dose.

How to prime NovoPen® 3:

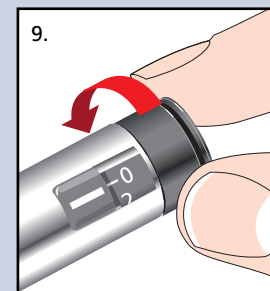
Check that the dose selector is set at zero.
Dial 2 units.

Hold NovoPen® 3 with the needle upwards and tap the Penfill holder gently with your finger a few times.

Fully depress the push button.
A drop of insulin should appear at the needle tip.

If a drop of insulin does not appear, repeat the above procedure until a drop of insulin appears.

Some air may remain in the Penfill® after priming, but the air will not be injected.



Choosing your dose

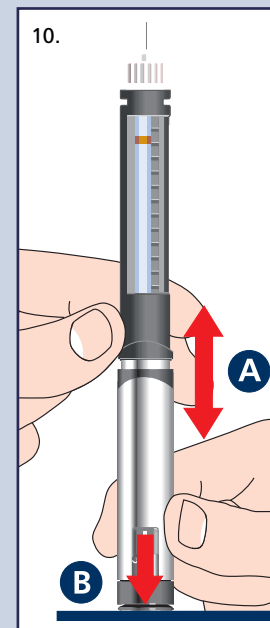
9. Check that the dosage selector is set at zero. If it is not, fully depress the push button.

The Penfill® holder has a scale with marks showing the approximate number of units left in the Penfill®.

Always check that there is enough insulin left for the injection.

Dial the number of units you need to inject.

The odd numbers are shown as full lines between the even numbers.



10. If you dial a larger dose than you need, pull the mechanical section and the Penfill® holder apart, as shown in the picture A. Whilst holding them apart, press the push button back to '0' against a hard surface and release your grip B.

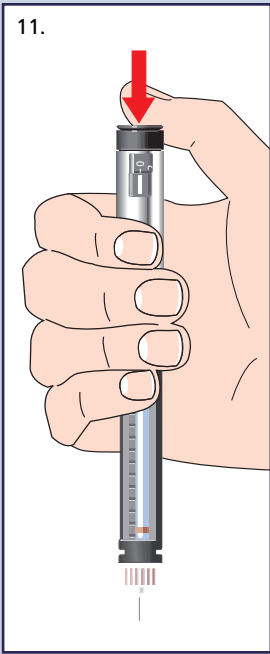
You can now dial the correct number of units.

NovoFine® 28G, 30G & 31G needles 100 needles per box



How to use your NovoPen® 3 Device.

11.



Making the injection

11. Use the injection technique shown to you by your health care professional.

Double check that you have selected the dose you need to inject.

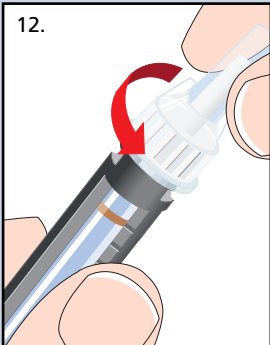
To inject, insert the needle under the skin and press the push button completely in.

With all insulin injection devices, the needle should remain under the skin for at least 6 seconds to ensure that the full insulin dose has been delivered. Keep the push button fully depressed until after the needle has been withdrawn.

If there is not enough insulin in Penfill® for the whole dose, you will be able to see the number of units you still need to inject in the dosage indicator window. You must always check this after you have made the injection.

Important: Never turn the dosage selector to inject the insulin.

12.

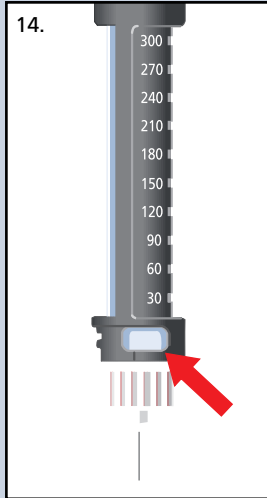
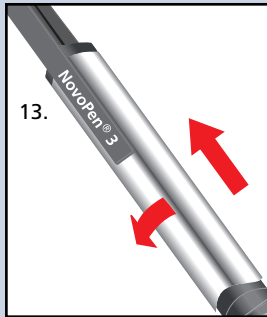


NovoFine® Needle Removal

12. Follow general precautionary measures for removal and disposal of needles to reduce the risk of unintended needle penetration. Whenever possible, you should remove your own needles. In circumstances where this is not possible, particular care should be taken by health care professionals, relatives and other carers. After the injection, carefully replace the NovoFine® outer needle cap and unscrew the needle.

Discard the needle carefully.

Replace the pen cap.



Subsequent injections

13. Twist and pull off the pen cap. Check that NovoPen® 3 contains the correct type of insulin.

If Penfill® contains a soluble (clear) insulin, follow points 7-12 of these instructions.

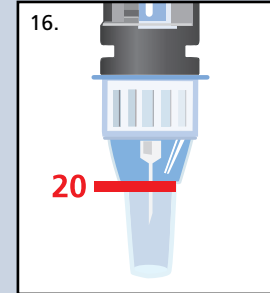
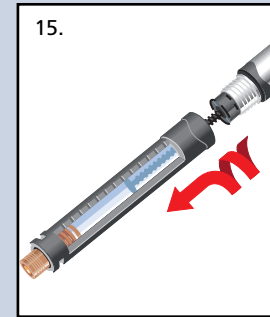
If Penfill® contains an insulin suspension (cloudy insulin), follow the instructions given in the package insert supplied with Penfill®.

What to do when Penfill® is nearly empty

14. Do not try to inject an insulin suspension (cloudy insulin) if you can see the rubber stopper (plunger) in the small inspection window. The glass ball must have adequate space to resuspend the insulin.

It is possible to select a dose larger than the number of units left in the Penfill®. However, if there is not enough insulin for the whole dose, you will be able to see the number of units you still need to inject in the dosage indicator window. Make a note of this number, change Penfill® (see point 15), prime (see point 8), dial the remaining dose and inject this dose.

15.



Changing Penfill®

15. Unscrew the Penfill® holder. Press the push button to set the dosage indicator to zero. Remove the empty Penfill®. Select a new Penfill® and continue as described from point 4.

Function Check

16. If you think that your NovoPen® 3 is not working properly, follow this procedure:

- Check that the mechanical section and the Penfill® holder are screwed securely together.
- Screw on a new NovoFine® needle as described in point 7.
- Prime NovoPen® 3 as described in point 8.
- Carefully replace the NovoFine® outer needle cap.
- Dispense 20 units into the cap.

The insulin should fill the lower part of the NovoFine® outer needle cap.

If the pen has delivered too much or too little insulin, repeat the test.

If it happens again, do not use the pen. Contact your supplier.

Do not try to repair a faulty NovoPen® 3.

Never use NovoPen® 3 unless you are sure that it is working properly.

This sheet is intended as a guide only and does not replace careful reading of the NovoPen® 3 instruction manual. NovoPen® 3 instruction manual can be found inside every new NovoPen® 3 package and should be read carefully before use. Novo Nordisk Pharmaceuticals Pty Ltd ABN 40 002 879 996. Level 3, 21 Solent Circuit Baulkham Hills NSW 2153.

PO Box 51268 Pakuranga, Auckland. © Registered trademark of Novo Nordisk A/S. AUS: www.novonordisk.com.au NZ: www.novonordisk.co.nz

Novo Nordisk Customer Care Centre 1800 668 626 (AUS) or 0800 733 737 (NZ)

This patient information sheet is for distribution by health care professionals only.

943099 / 01.08 / HJ08806